

Übungen zur Fläche

(1) Berechne den *Umfang* und zeichne im jeweils gegebenem *Maßstab*!

Abb.:1: 1: 2000;    Abb.:2: 1: 4000;    Abb.:3: 1: 5000;

Abb.:4: 1: 10000;    Abb.:5: 1: 2000

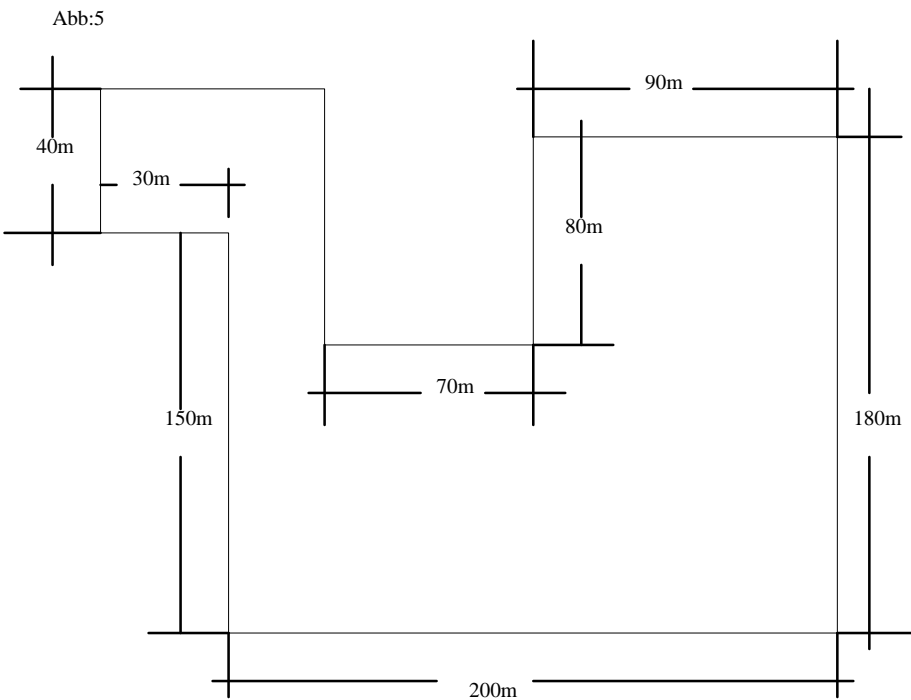
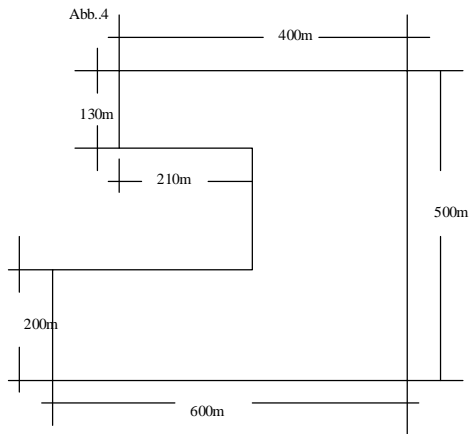
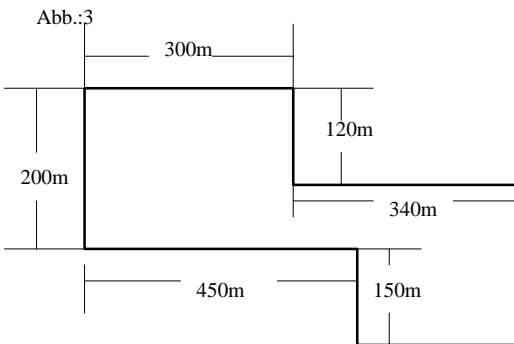
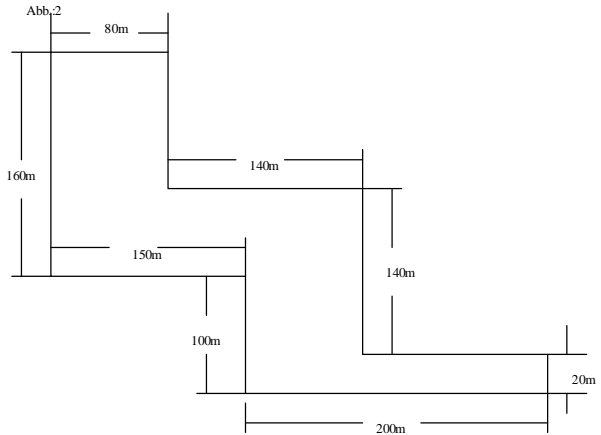
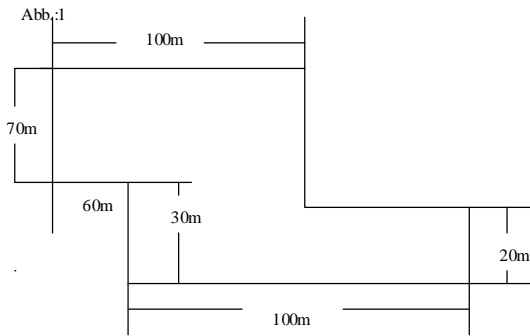


Abb.:1 520m; Abb.:2 1220m, Abb.:3 1980m, Abb.: 4 2620m Abb.:5 1000m